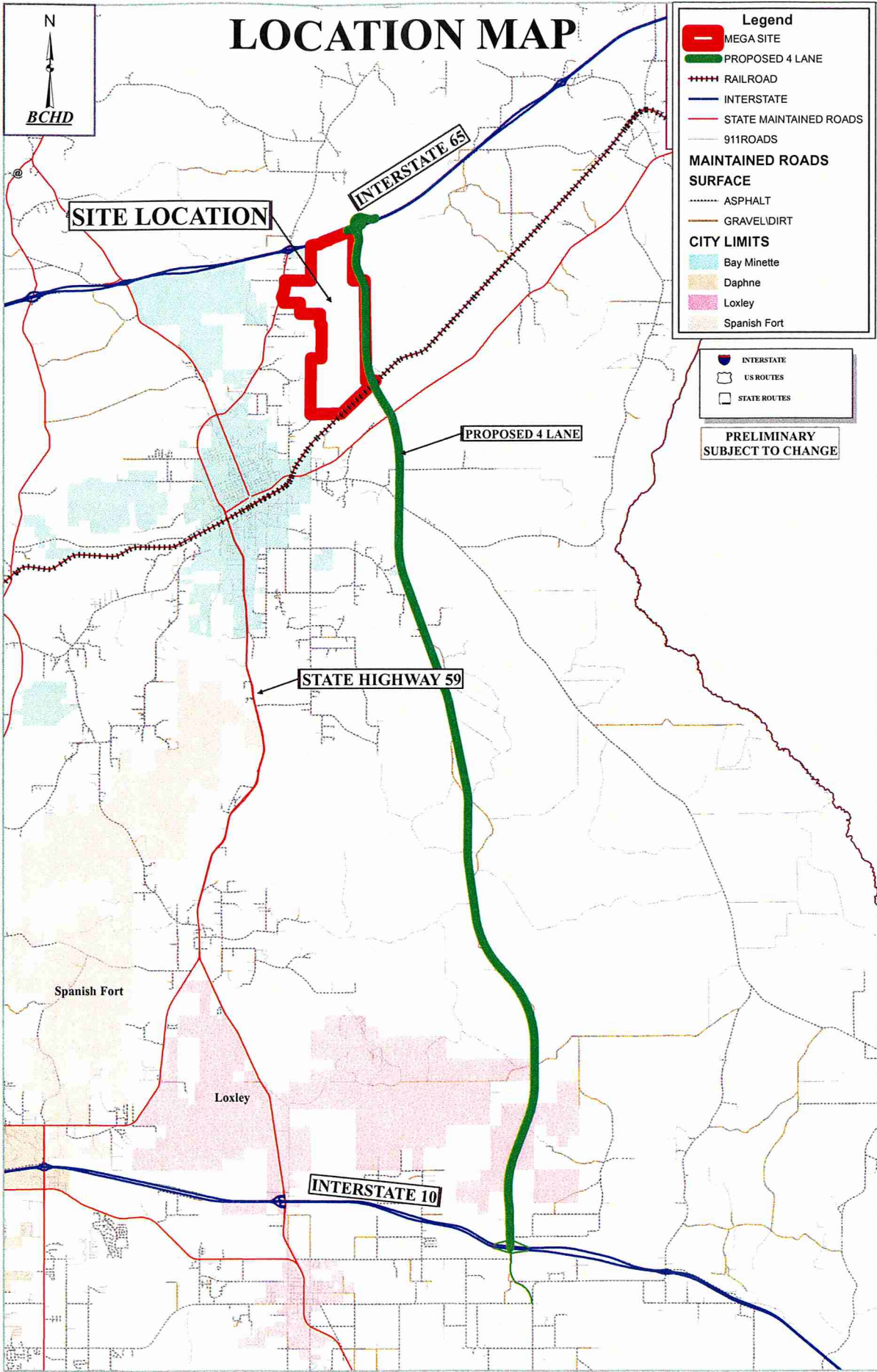


# LOCATION MAP



**Legend**

- MEGA SITE
- PROPOSED 4 LANE
- RAILROAD
- INTERSTATE
- STATE MAINTAINED ROADS
- 911ROADS

**MAINTAINED ROADS SURFACE**

- ASPHALT
- GRAVEL/DIRT

**CITY LIMITS**

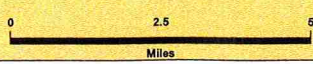
- Bay Minette
- Daphne
- Loxley
- Spanish Fort

- INTERSTATE
- US ROUTES
- STATE ROUTES

**PRELIMINARY  
SUBJECT TO CHANGE**



**BALDWIN COUNTY**  
BALDWIN COUNTY HIGHWAY DEPARTMENT  
PROPOSED CONNECTOR  
FROM I-10 TO I-65



**PRELIMINARY  
SUBJECT TO CHANGE**

